



Chromosomes and Microarrays Deciphering the Technology

Angela Scheuerle, M.D.

Tesserae Genetics

Texas BDES

ISCN 2009

An International System for
Human Cytogenetic Nomenclature (2009)

Editors

Lisa G. Shaffer

Marilyn L. Slovak

Lynda J. Campbell

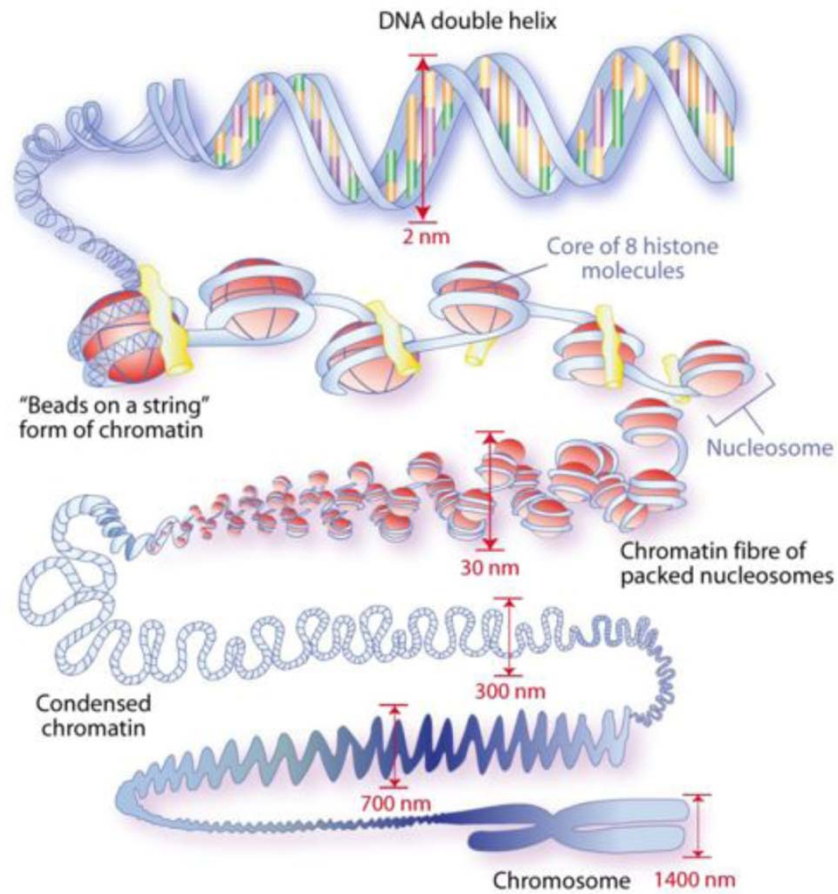
Recommendations of the
International Standing Committee on
Human Cytogenetic Nomenclature



KARGER

Published in
collaboration with
**Cytogenetic and
Genome Research**

Molecule of DNA

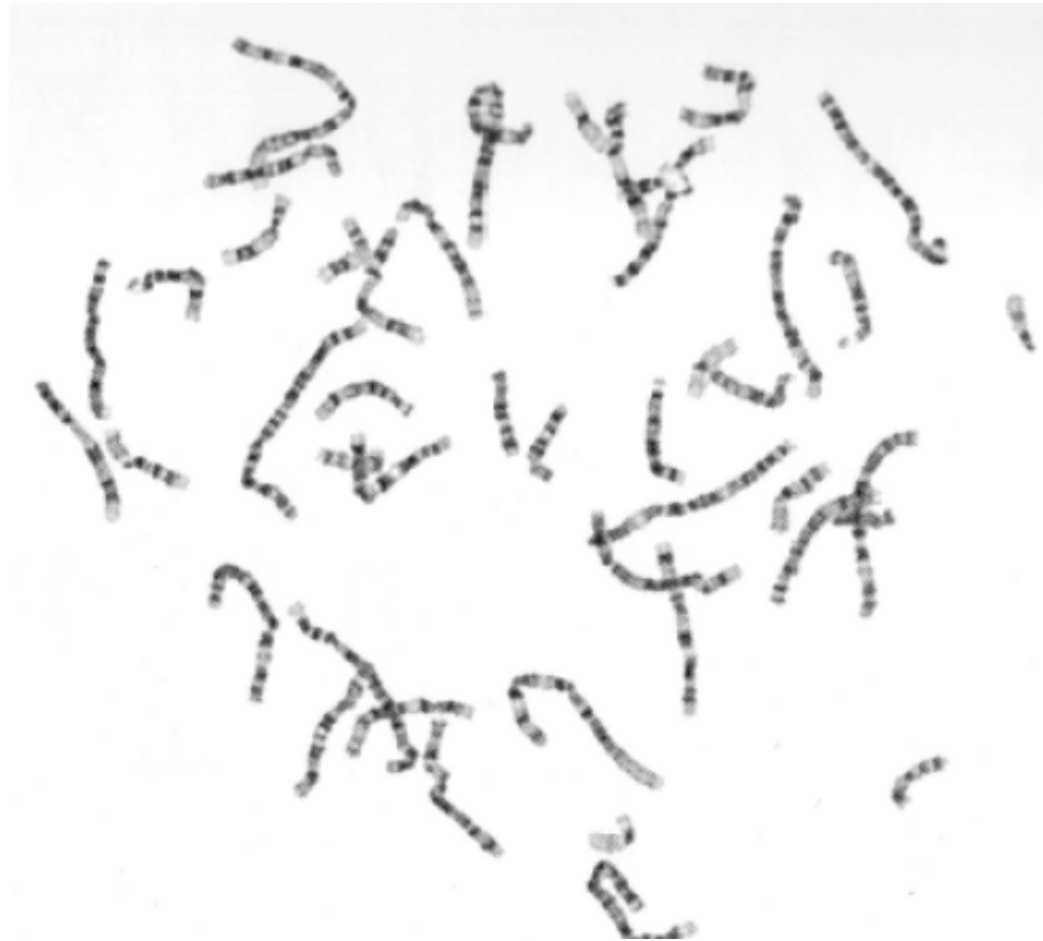


6 Feet of
DNA in
each Cell

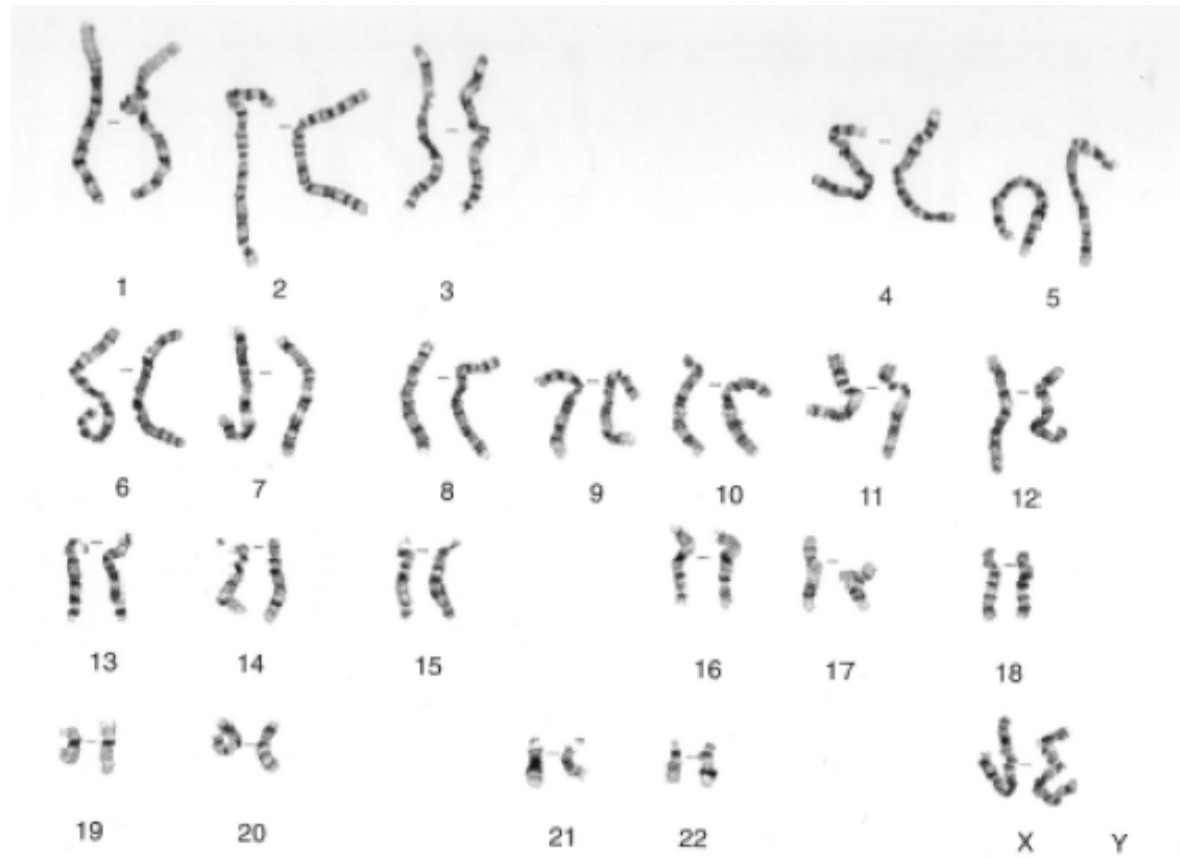
Chromosome

- One huge molecule of DNA
- 100s – 1000s of genes on each
- Visible under a regular microscope
- To be big enough to see, a change must be 4 million bases in size or greater ($\geq 4\text{Mb}$)
 - Roughly the size of a band on the chromosome

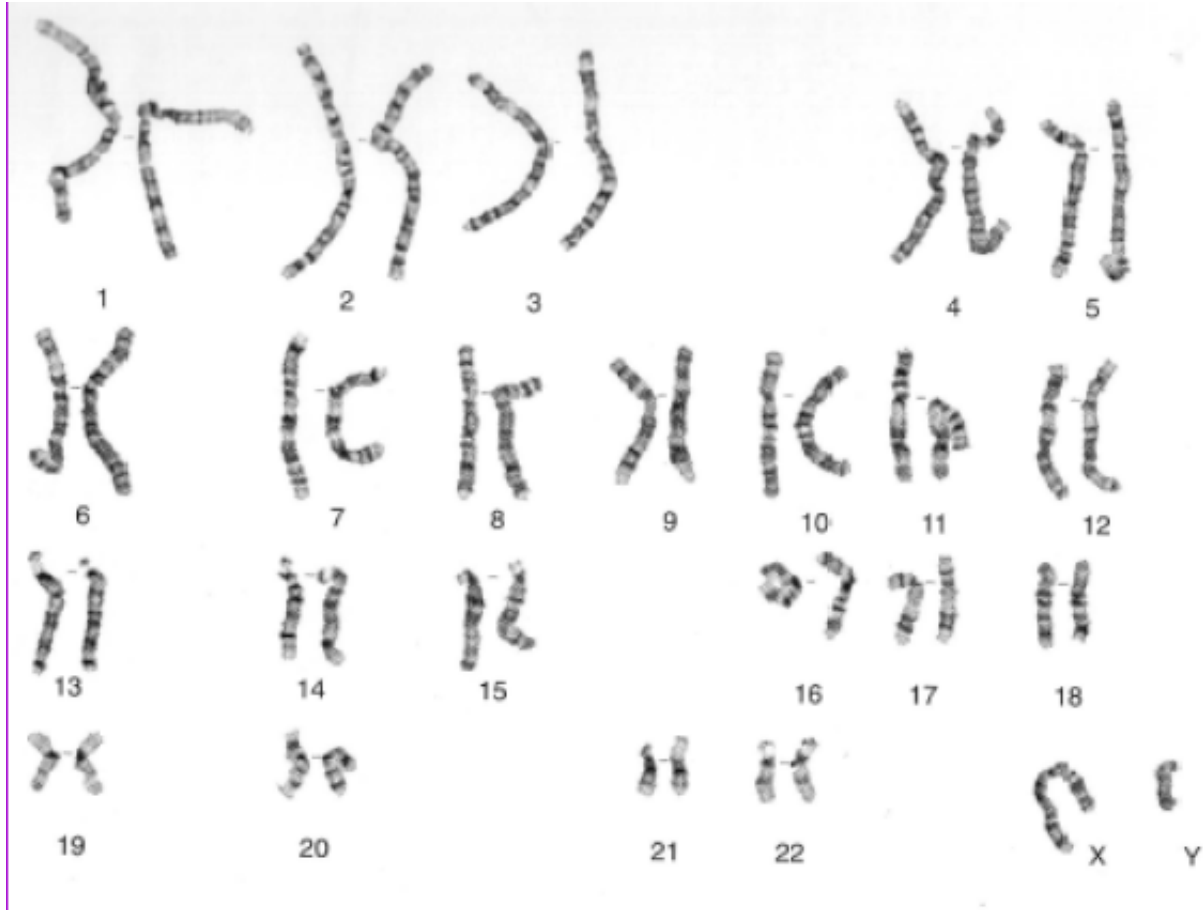
Chromosomes



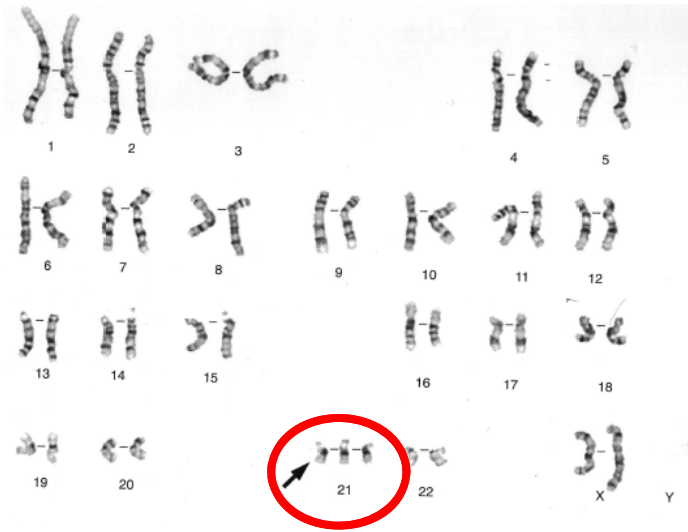
46,XX



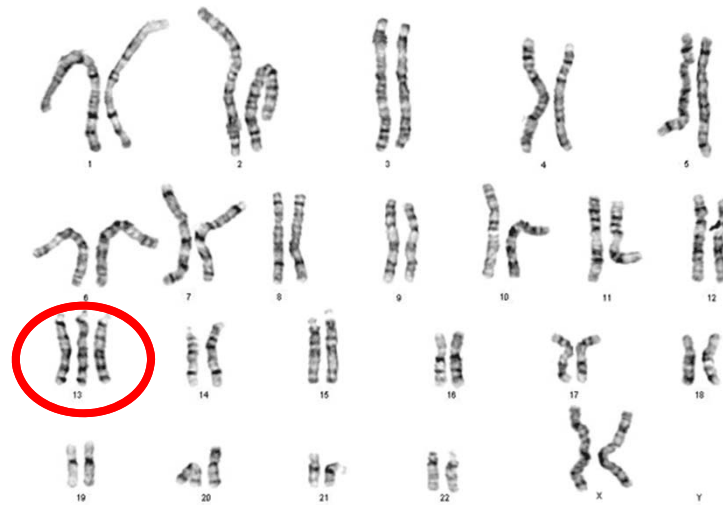
46,XY



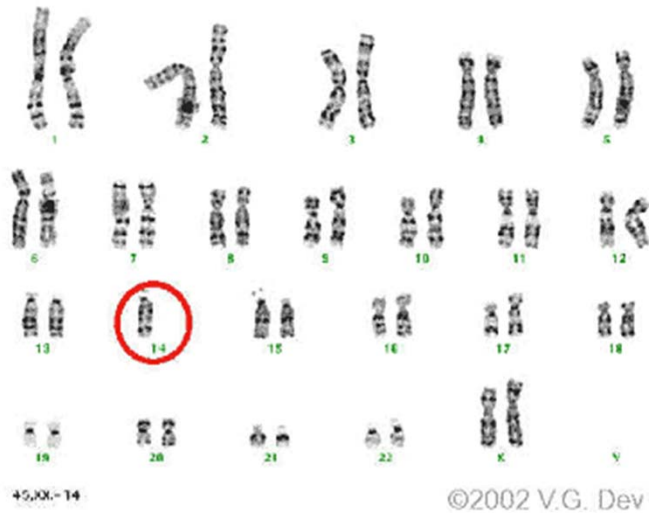
47,XX,+21



47,XX,+13



45,XX,-14



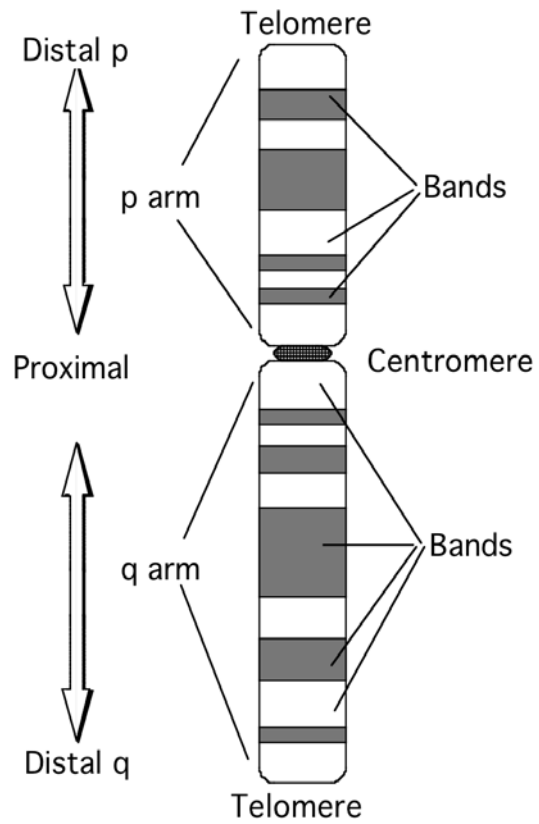
45,X



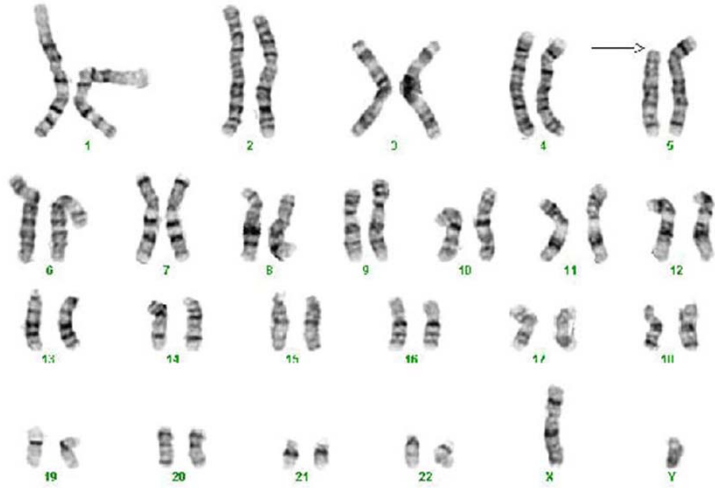
45,XX,-14

©2002 V.G. Dev

Chromosomes



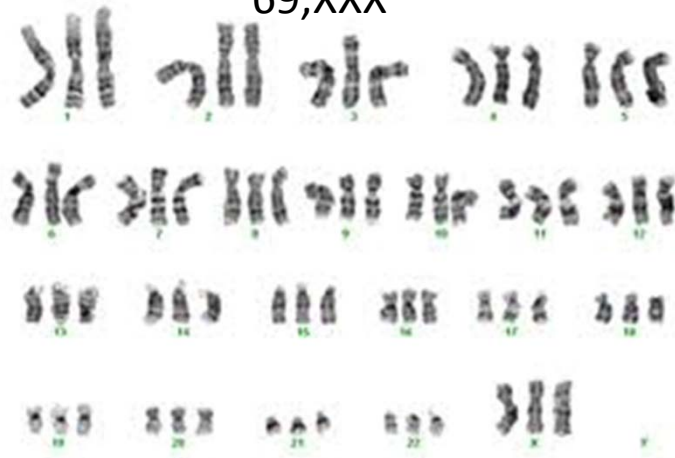
46,XY,del(5)p



45,XX,t(14;21) or 45,XX,rob(14;21)

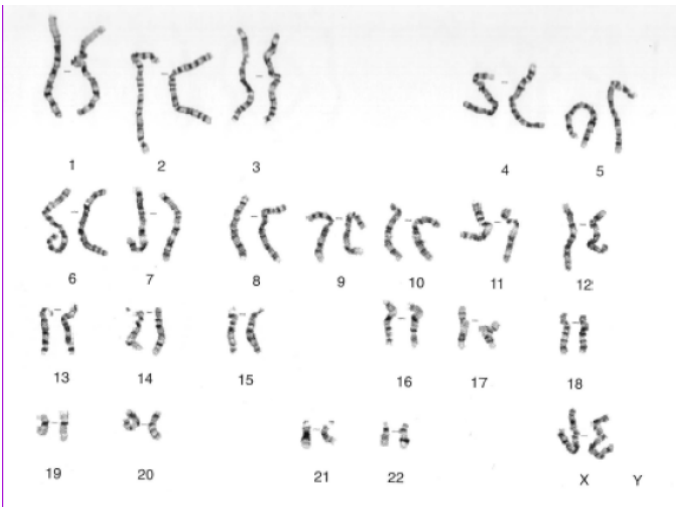


69,XXX

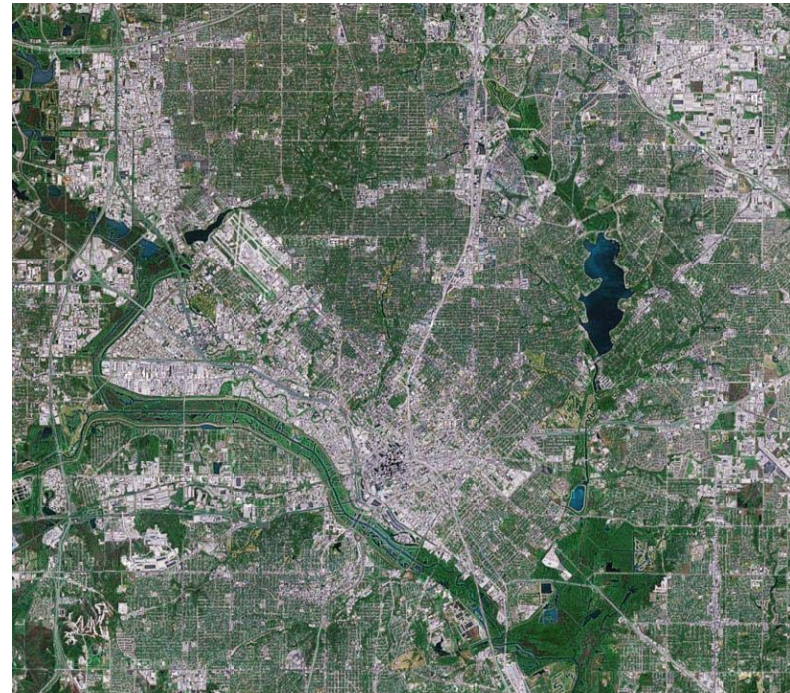


Airplane Analogy

Looking at the genetic material like this



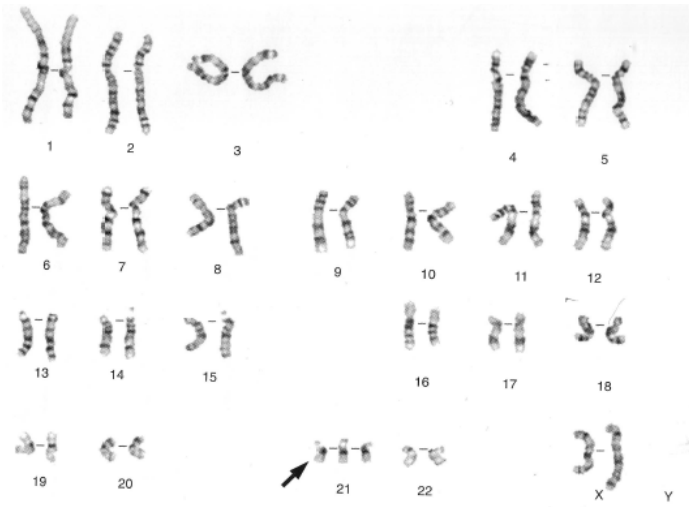
Looking at a city like this



=

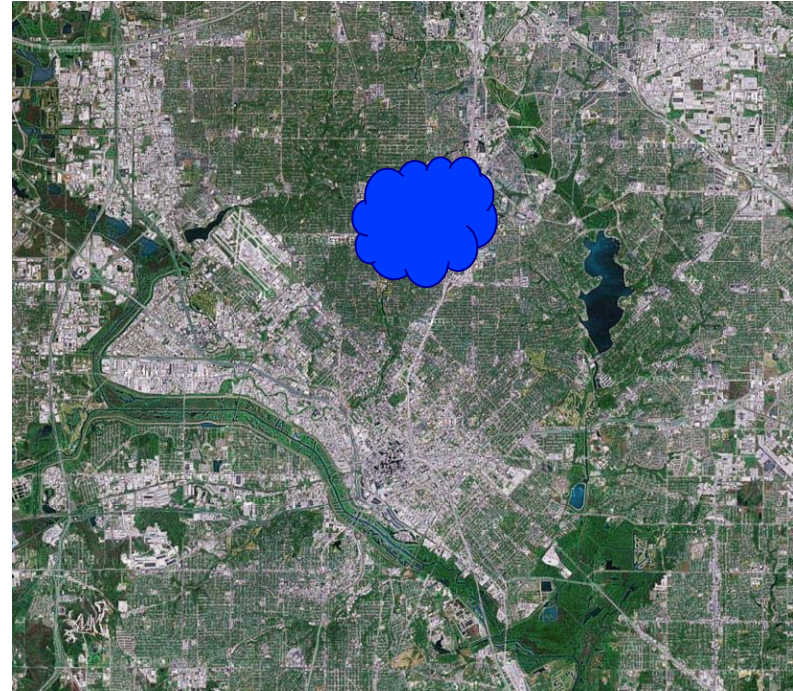
From an Airplane

Having an extra chromosome

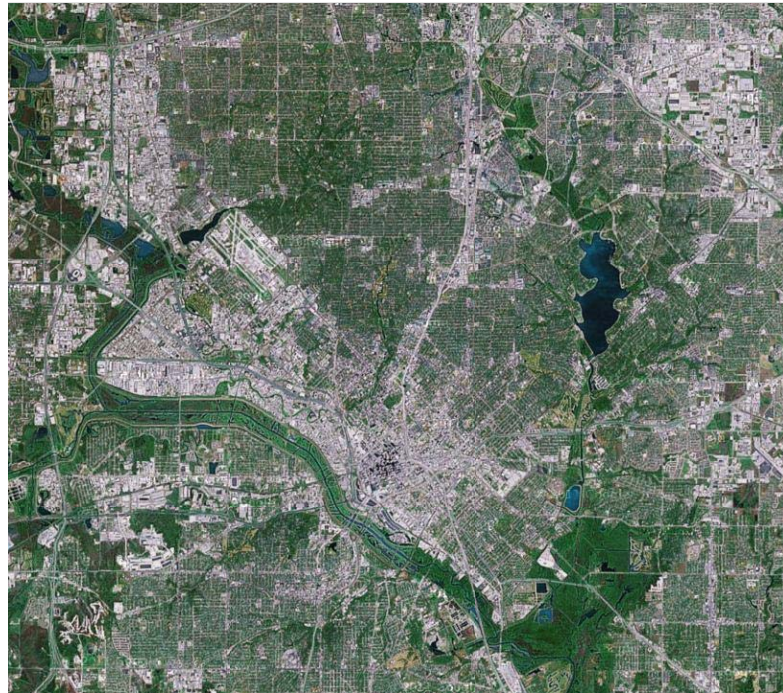


=

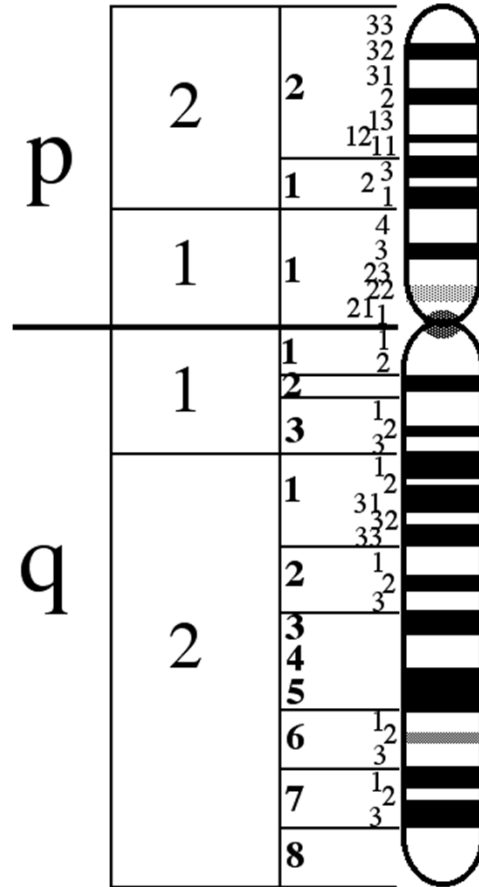
Adding a lake



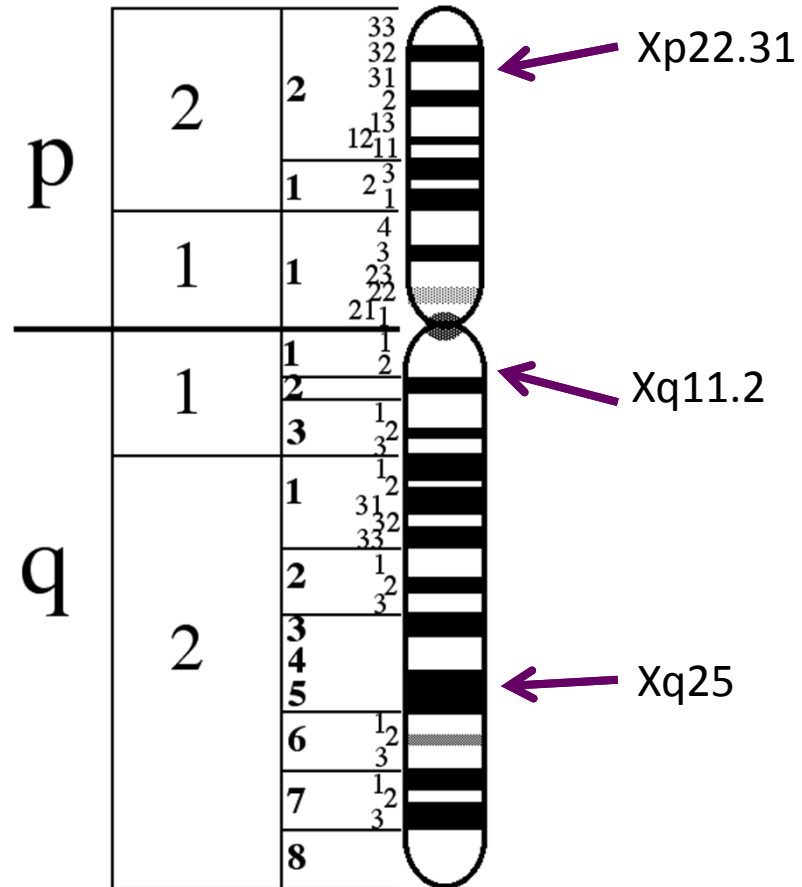
What about a particular address?

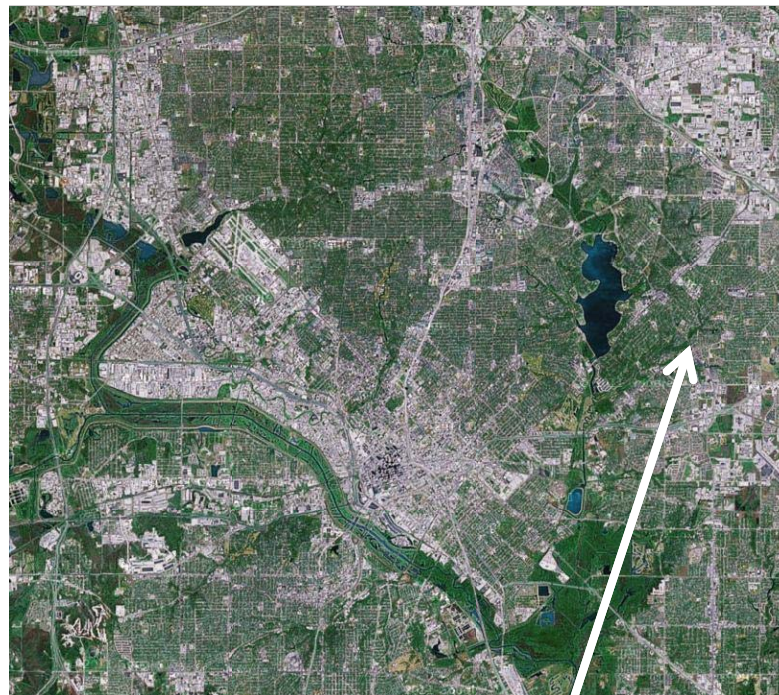
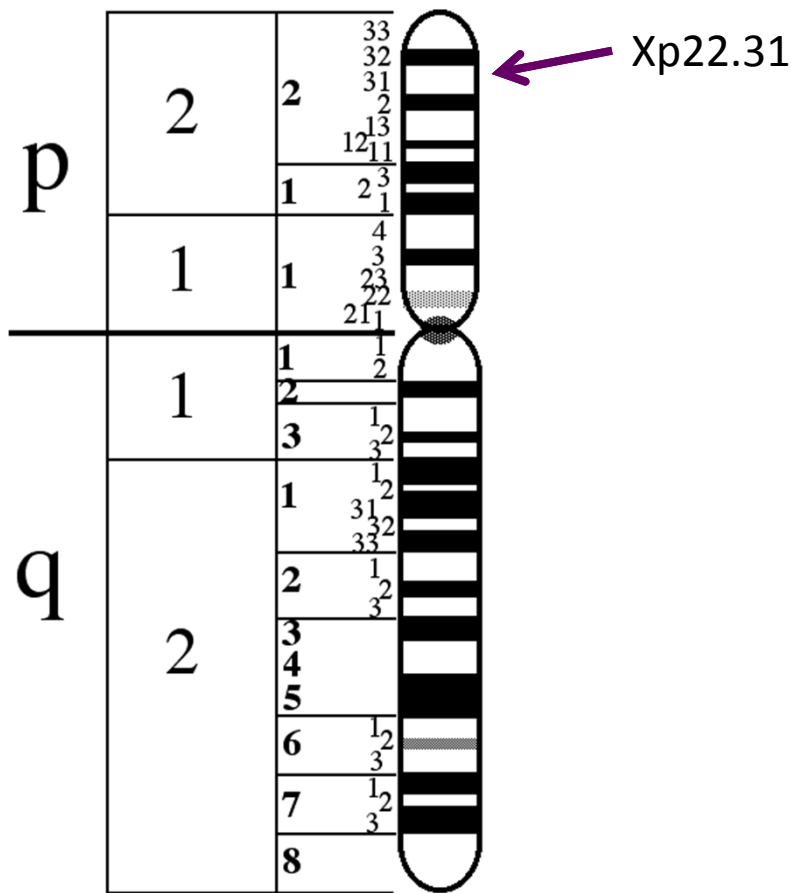


Chromosomes



Chromosomes





9702 Vinewood

What is the correct reading?

22q11.21

- A) Twenty-two q eleven point twenty one
- B) Two two q one one point two one
- C) Twenty-two q one one point two one
- D) Two two q eleven point twenty one

What is the correct reading?

22q11.21

A) Twenty-two q eleven point twenty one

B) Two two q one one point two one

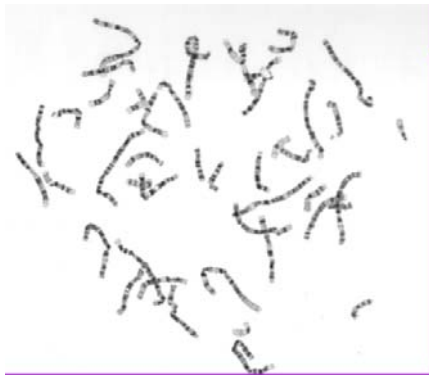


Twenty-two q one one point two one

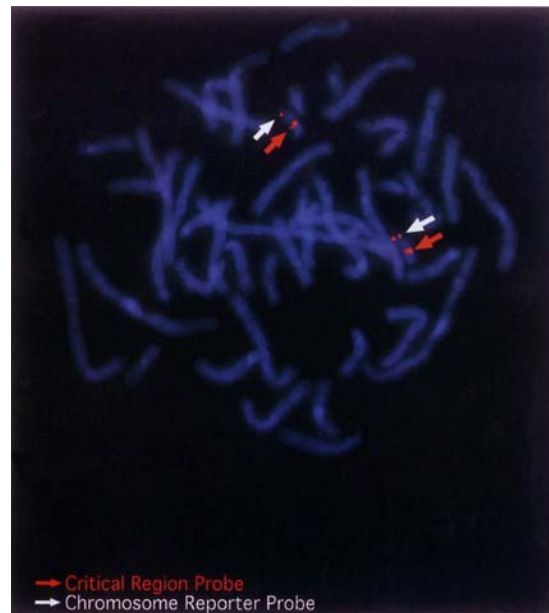
D) Two two q eleven point twenty one

FISH

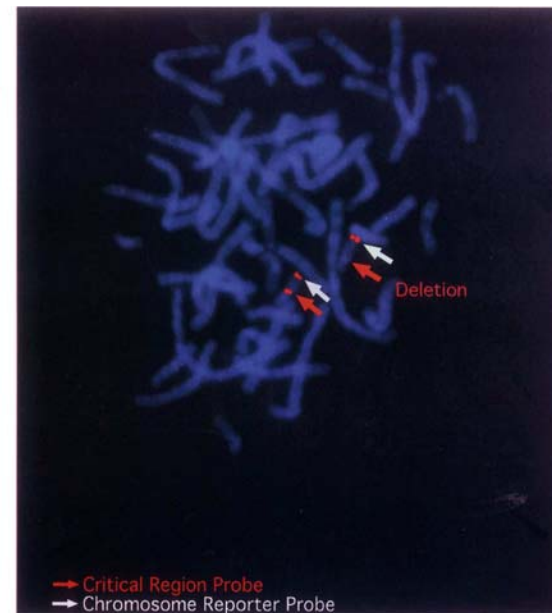
- Will tell you what is going on at a particular address
- Won't tell you what is going on anywhere else.
- Limited usefulness these days as a first-line test
 - You will see it less and less over time
 - Used as confirmation in microarray testing



FISH

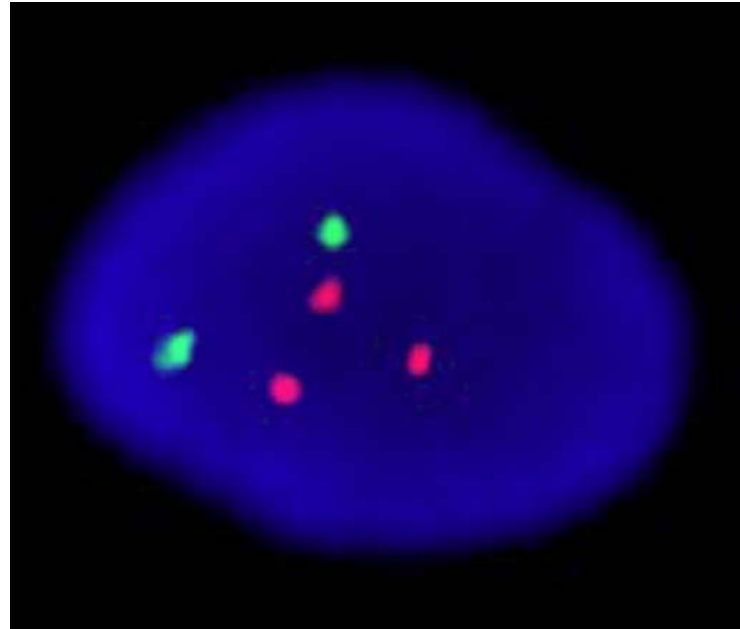
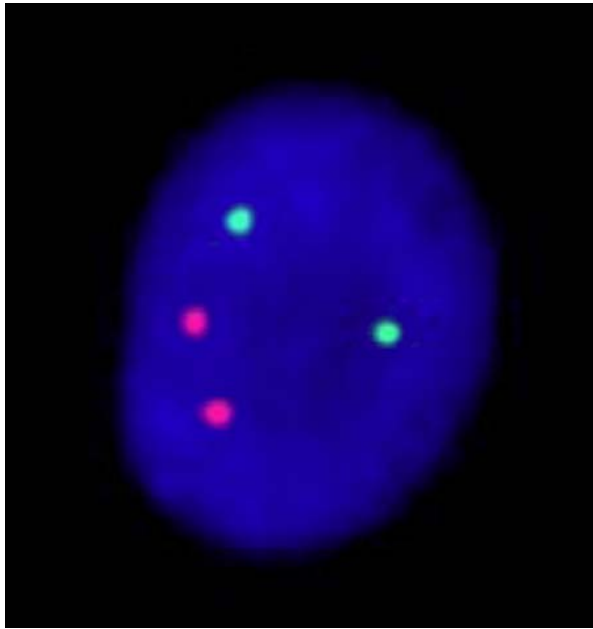


46,XX,ish(22)(q11.2)

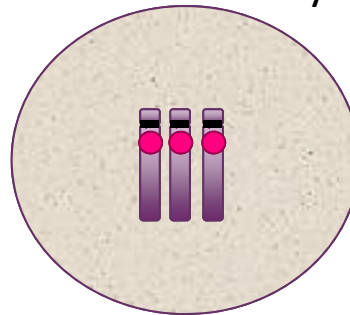


46,XX,ish del(22)(q11.2q11.2)

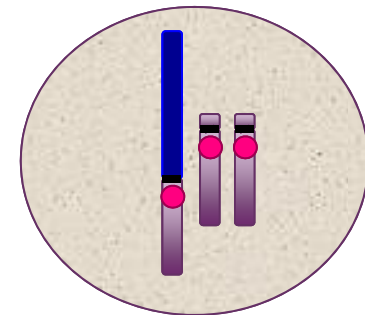
Interphase FISH



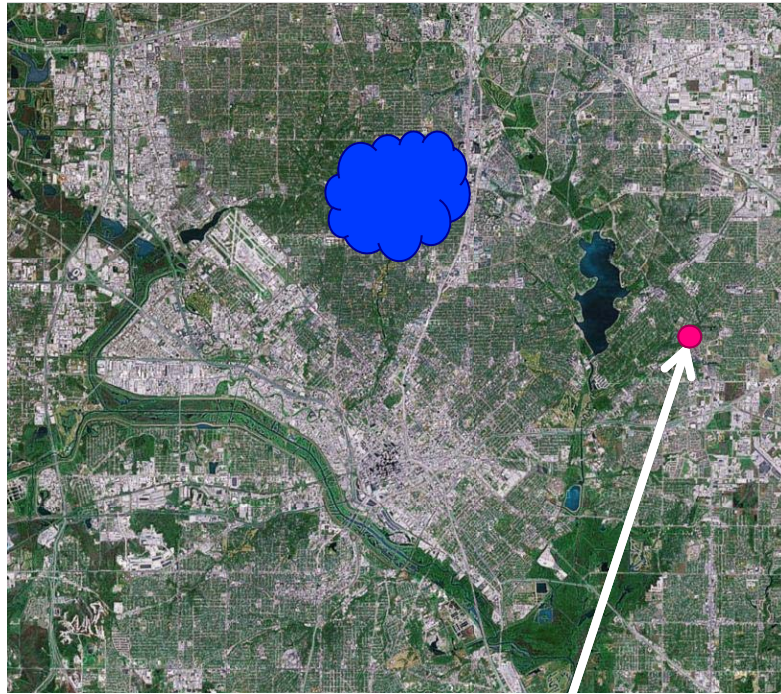
“Free” Trisomy



Translocation Trisomy



Missing the Lake



9702 Vinewood

Cytogenomic Microarray

- CMA
 - Cytogenetic Microarray Analysis
- aCGH
 - Array Comparative Genome Hybridization
- Variety of proprietary names
 - Affy, Nimblegen, Roche, etc.
 - Generally identifying the company making the physical hardware

Cytogenomic Microarray

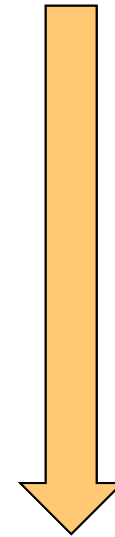
- What it will tell you
 - Submicroscopic additions and deletions
 - Like doing FISH on 200,000 (or more) places
 - SNP arrays will tell about chromosome inheritance
- What it won't tell you
 - Single gene mutations
 - Balanced translocations

Cytogenomic Microarray

Specificity



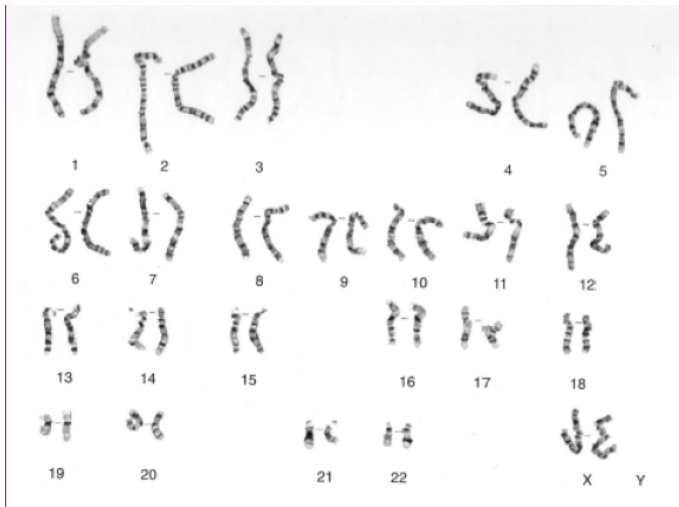
- Targeted
- BAC (44K)
- Oligo (150K+)
- SNP (600K+)



Sensitivity

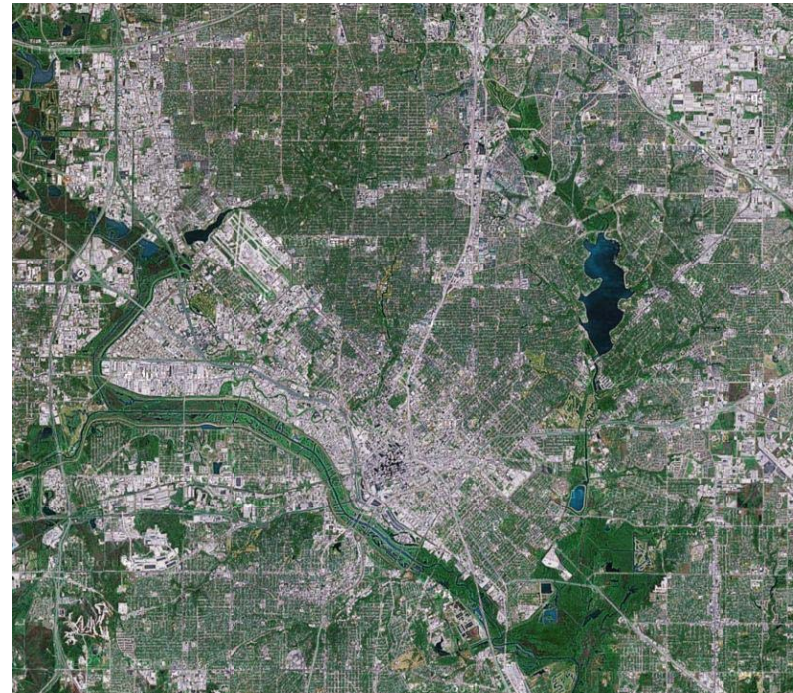
Airplane Analogy

Looking at the genetic material like this



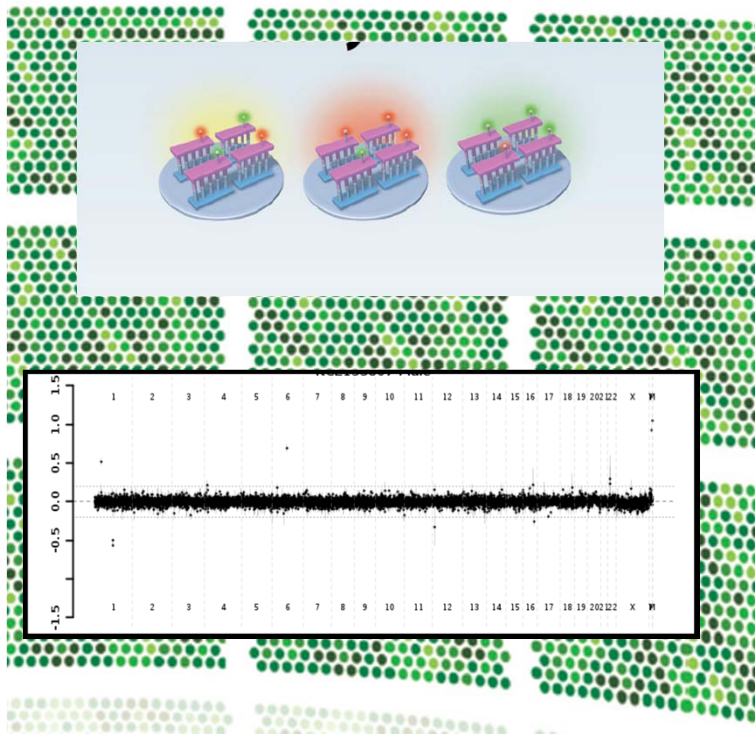
=

Looking at a city like this

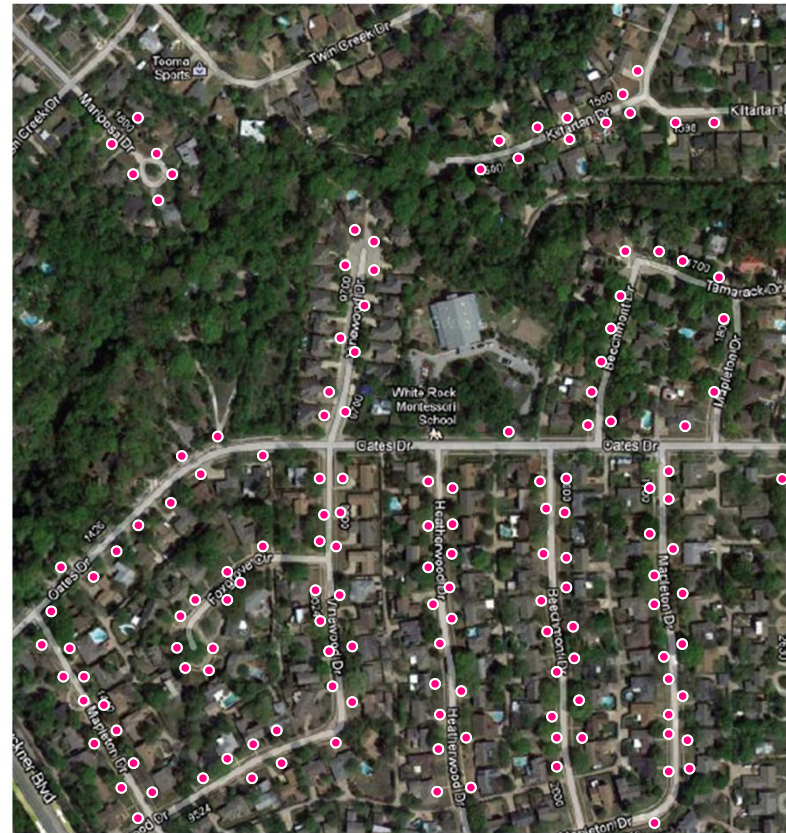


Mailman

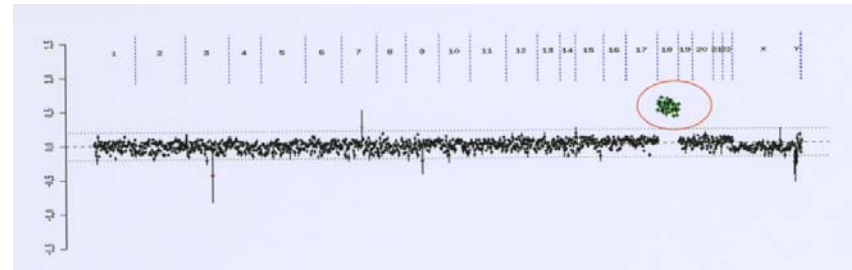
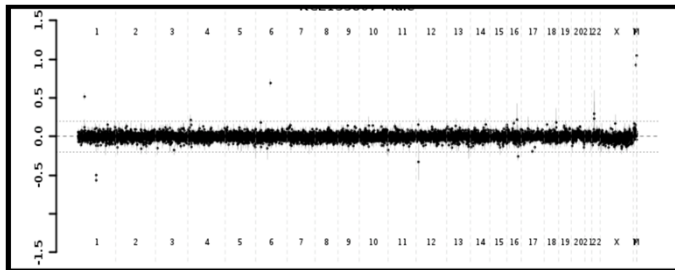
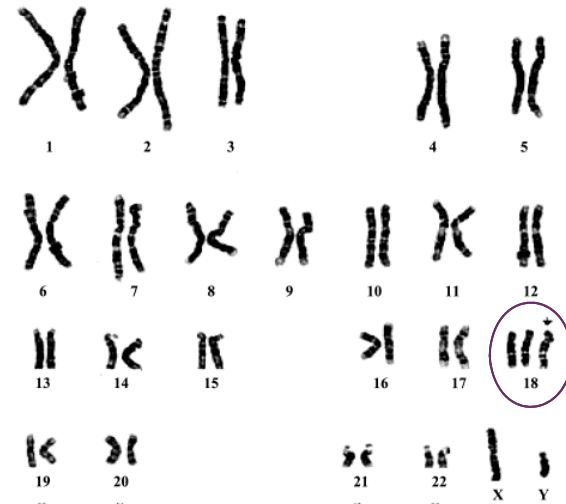
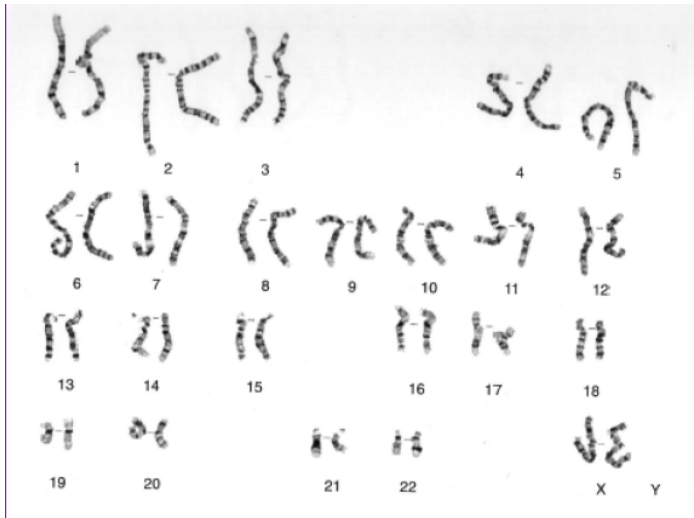
Doing aCGH



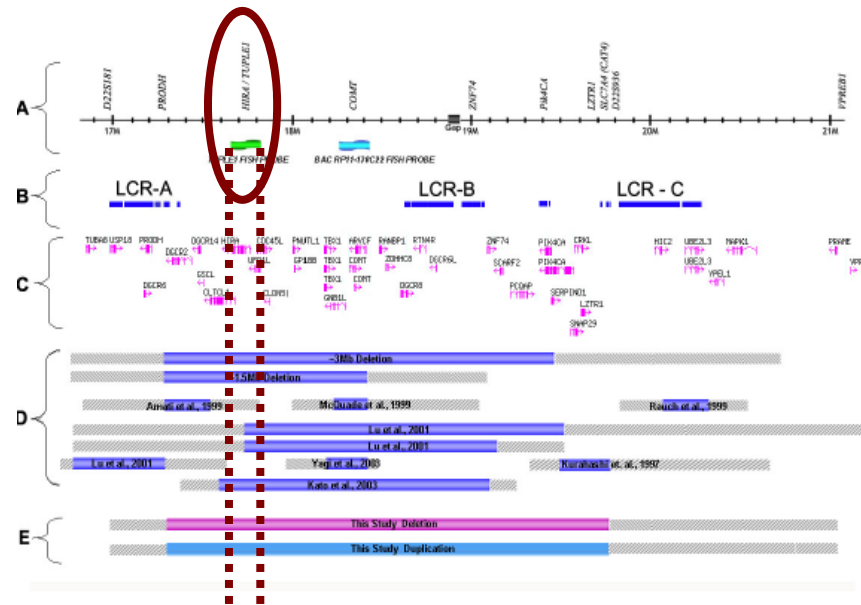
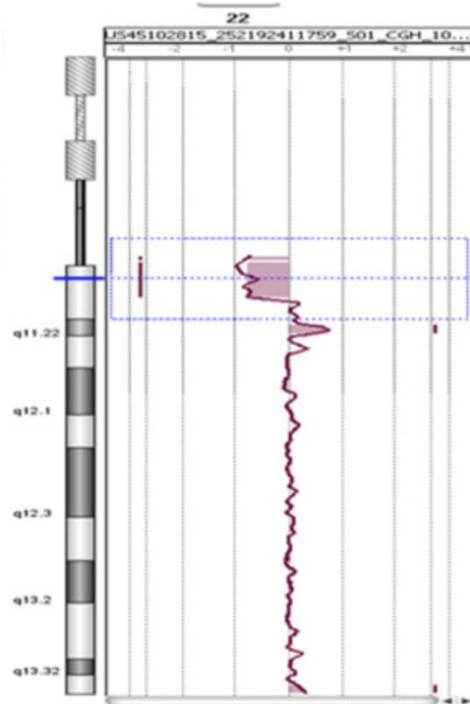
Knowing what mailboxes have mail in them



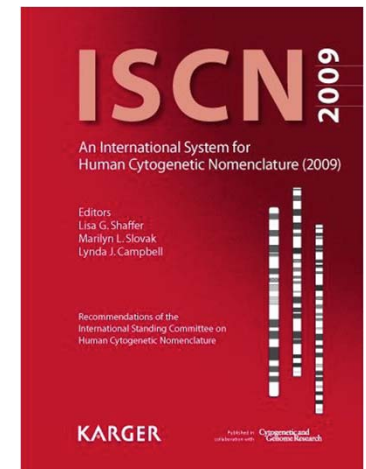
Array



Deletion 22q11.21



Nomenclature



Indication	Abbreviation(s)
FISH was done	ish
Microarray was done	arr
Extra of something	“+”, “x”, add, dup, mar
Something missing	“-“, del, r
Rearrangement	der, ins, inv, rob, t

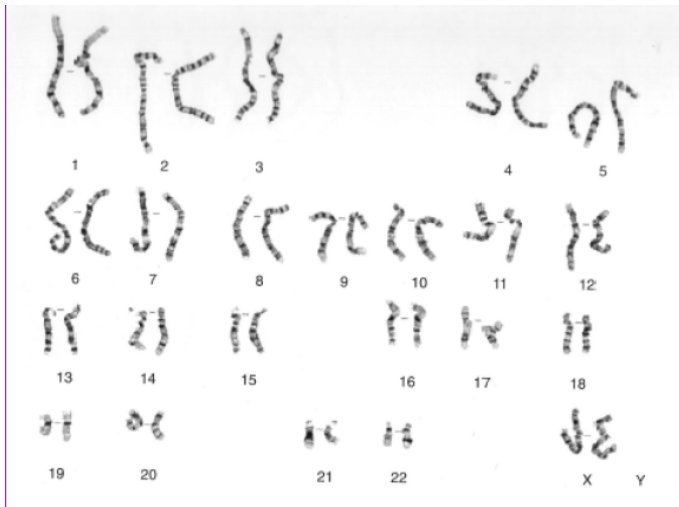
Normal v Abnormal

Technology	Normal Result	Abnormal Result
Routine Kayrotype	46,XX or 46,XY	46,XX,del(22)(q11.2)
FISH	46,XY,ish(22)(q11.2)	46,XY,ish del (22)(q11.2q11.2)
Microarray	Arr (1-22,X)x2	Arr (22)(q11.21q11.21)x1

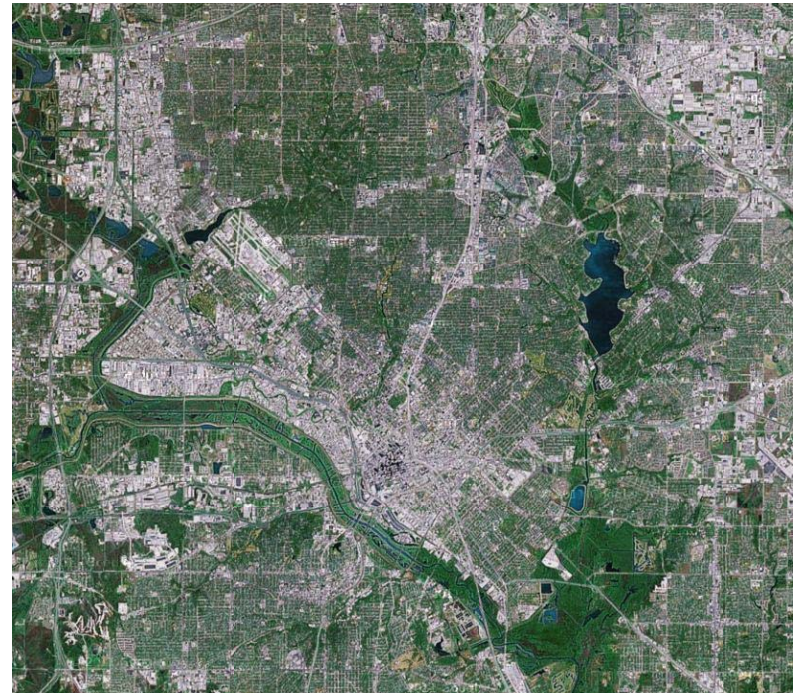
One Last Analogy

Airplane Analogy

Looking at the genetic material like this



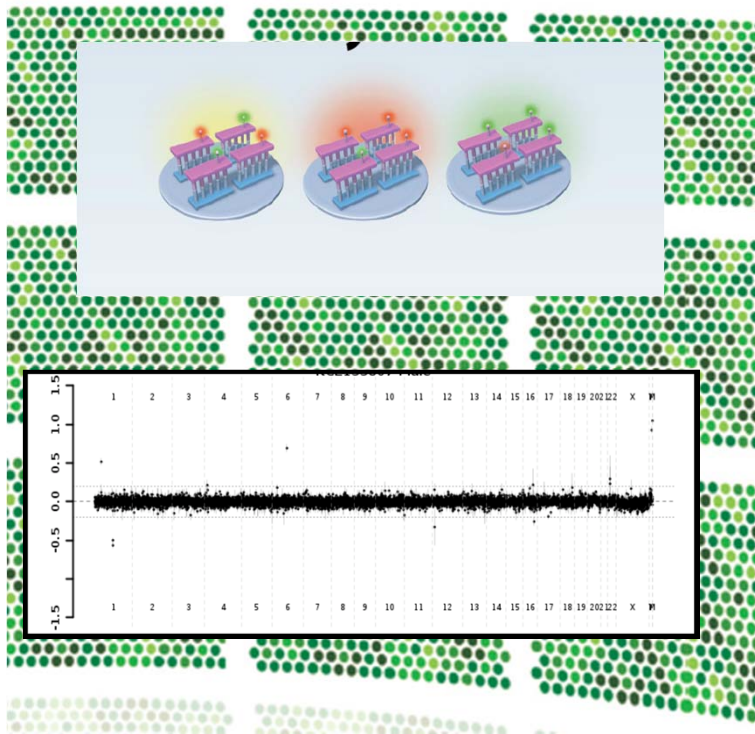
Looking at a city like this



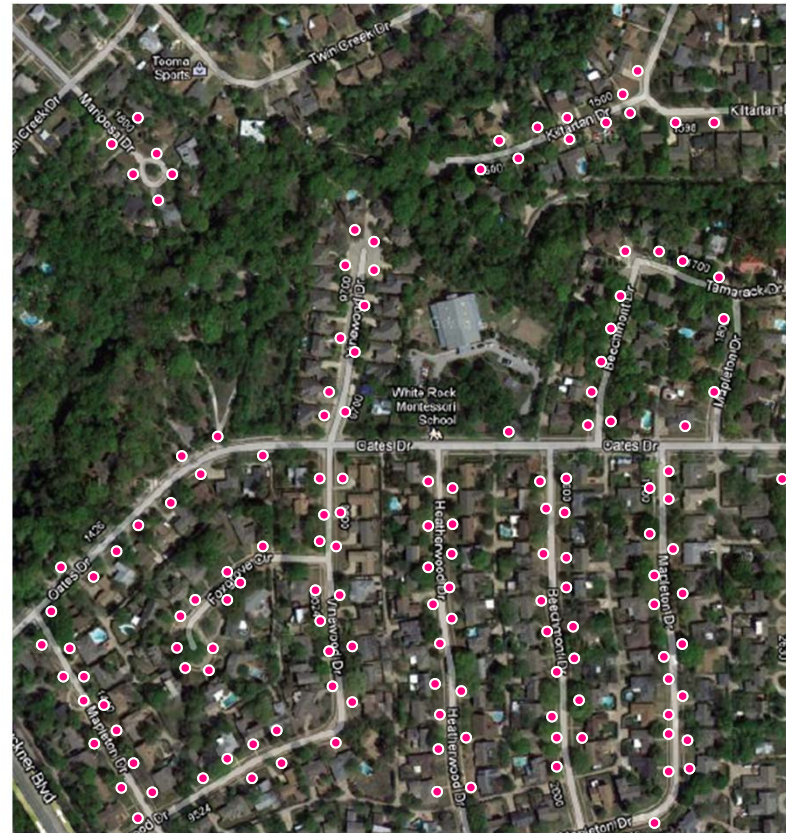
=

Mailman

Doing aCGH

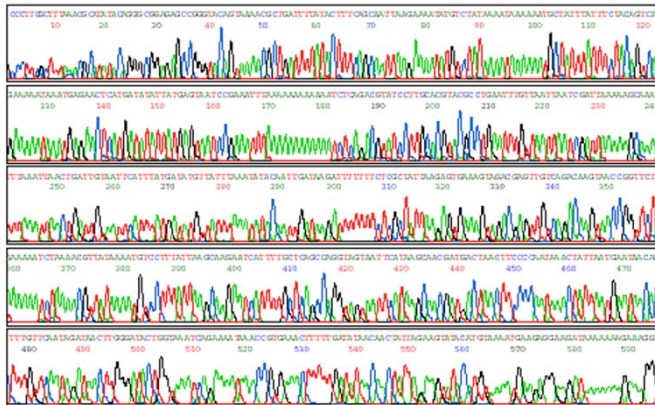


Knowing what mailboxes have mail in them



Water Bill

Looking for a mutation
in a single gene



Is like seeing how much I owe
on my water bill

